

Data current as of: 10-09-2025 02:16

Link to the product: <https://emrawood.com/smooth-upholstered-wooden-bench-eco-leather-lgs-53-florence-2529-p-11550.html>



## Smooth Upholstered Wooden Bench Eco Leather LGS-53 FLORENCE-2529

|               |                  |
|---------------|------------------|
| Number        | 4867             |
| Producer code | LGS-53           |
| Manufacturer  | Emra Wood Design |

### Product description



Smooth Upholstered Wooden Bench Eco Leather LGS-53 FLORENCE-2529  
| Width: 40 cm - 200 cm | Height: 40 cm - 50 cm | Depth: 30 cm - 40 cm |

Technical data

Product-Code:

---

LGS-53

Catalogue number:

4867

Condition:

New

Bench width:

40 cm - 200 cm

*Choose from parameter*

Bench height:

40 cm - 50 cm

*Choose from parameter*

Bench depth:

30 cm - 40 cm

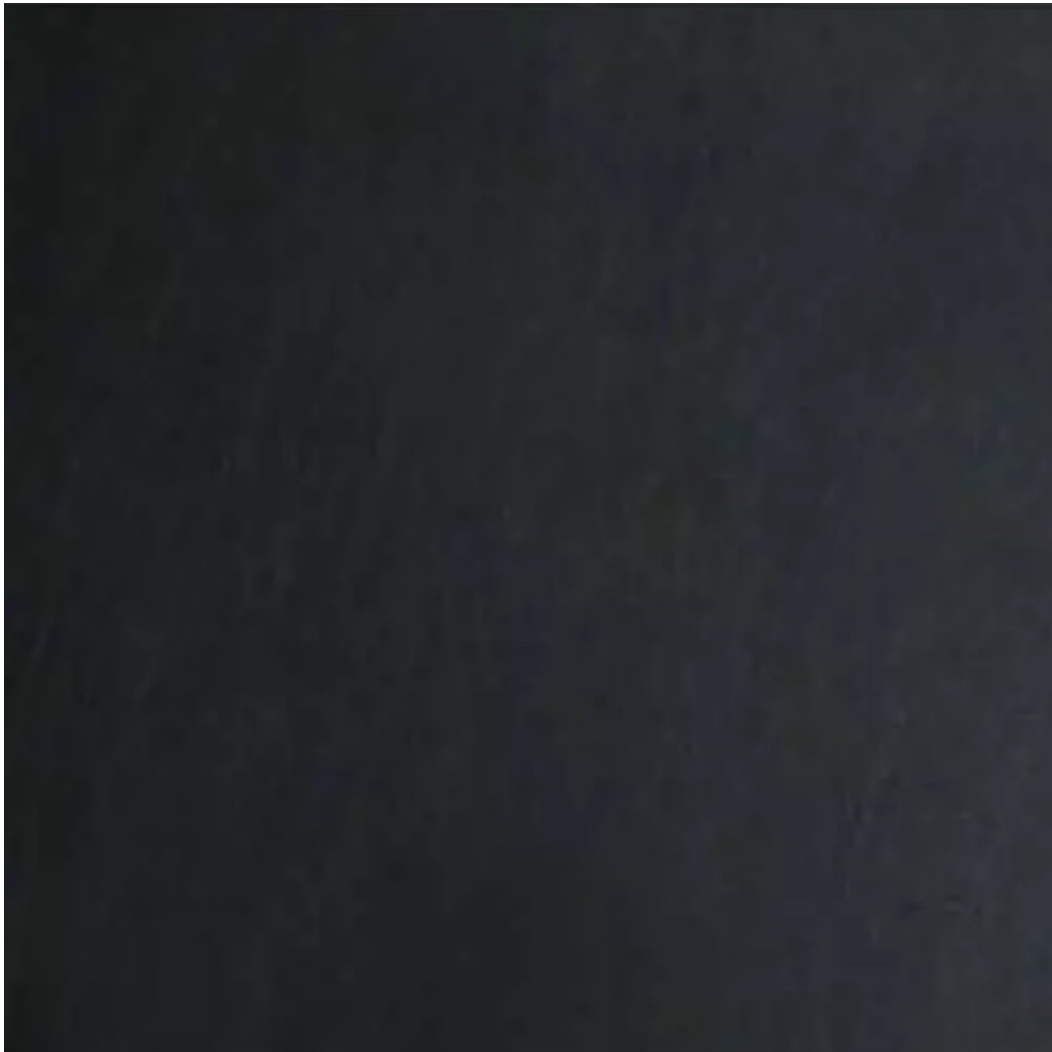
*Choose from parameter*

Type of fabric:

*Choose from parameter*

Type of fabric (Photo):

FLORENCE-2529



#### Product description

##### **Smooth Upholstered Wooden Bench Eco Leather LGS-53 FLORENCE-2529**

- A functional and practical bench for hallway, living room, bedroom, dressing room, bathroom, reception and office
- Some bench models have a practical shelf for shoes
- The frame and upholstery are made of the highest quality materials
- Production of the bench according to customer requirements

#### Product features

- Very high-quality and precise workmanship directly from the manufacturer
- The bench features an interchangeable seat to adapt the product to the future appearance of the room
- The bench does not require self-assembly and is delivered to the customer in its entirety
- Take a look at our fabric palette for more options
- We are at your disposal if you have any questions about the product
- By purchasing a product, you are buying a non-prefabricated item made according to specifications (selection of color, upholstery, materials, etc.)

---

## About us

The Emra Wood company has been on the market since 2017. All products, which are handcrafted, are characterized by their aesthetic appearance and, above all, functionality at a high level. We have our own joinery and paint shop, as well as a well-trained team of professionals. We always try to meet the expectations of our customers. We use a wide range of high-quality upholstery materials of domestic and foreign production, which, combined with professional assembly, ensure their long-term functionality. Our company offers professional advice at the highest level. Our products are always tailored to individual requirements and needs.

### **WE DESIGN**

We combine proven solutions with the right amount of inspirational creativity, which is why each of our projects is so unique.

### **WE IMPLEMENT PROJECTS ACCORDING TO INDIVIDUAL NEEDS**

At the same time, we make full use of modern technologies, not forgetting about the technique of manual woodworking, which carpenters have been using for generations.

**WE CONSULT AND ARE PROUD OF OUR WORK!** We share our many years of experience with our customers so that the end result exceeds initial expectations. The products we manufacture are functional, aesthetic and made from the highest quality materials.



Discover upholstery fabrics for this product

We offer the largest selection of seat fabrics!

Click on fabric name and discover all fabric selection.

[ANDRE](#)





ART-DECO-VELVET



ATOS-ECO-LEATHER



AURORA





BALOO



BLACK-WHITE-VELVET



BLOOM



BRAID



CASABLANCA





CHARM-ME



CHILL-ME



CRUSH



DREAM-VELVET



FLASH





FLORENCE-ECO-LEATHER



FLOWER-VELVET



FUSHION-ECO-LEATHER





GEODY



HAMILTON



HEXAGON-VELVET



[HOLD-ME](#)



HUSK-VELVET





HYGGE



LEAF-VELVET



[LIKE-ME](#)





LINEA



MANDALA-VELVET



MAYA





MILTON-NEW



MIU



MONSTERA-VELVET





PATTERN-VELVET



PIANO





ROSSA



SPELLO



STRONG



TIERRA



VENUS





VERA



VIENNA-ECO-LEATHER



ZOYA



Color palette - Wood stain - Nitro

⚠ Please note that the color of the wood may vary slightly from the color in the photo! ⚠



00



23-05





23-32



BN-125/09



22-01



22-10



22-481



22-61



22-60



22-68



25-25



21-19





23-01



23-351



20-01



21-57



22-05



22-51



22-62



25-50





22-65



26-32



21-05



23-24



23-48



20-07



22-112



22-15





22-45



22-63



22-40



22-66



27-50



21-37



23-29



23-50

This product has additional options:



---

**Width:** 40 cm , 45 cm , 50 cm , 55 cm , 60 cm , 65 cm , 70 cm , 75 cm , 80 cm , 85 cm , 90 cm , 95 cm , 100 cm , 105 cm , 110 cm , 115 cm , 120 cm , 125 cm , 130 cm , 135 cm , 140 cm , 145 cm , 150 cm , 155 cm , 160 cm , 165 cm , 170 cm , 175 cm , 180 cm , 185 cm , 190 cm , 195 cm , 200 cm

**Height:** 40 cm , 45 cm , 50 cm

**Depth:** 30 cm , 35 cm , 40 cm

**Hanger height:** 190 cm

**Number of hangers:** 3 , 4 , 5 , 6

**Side of shelf:** Left , Right

**Side of deeper seat:** Left , Right

**Side of hanger panel:** Left , Right

**Side of drawer:** Left , Right

**Type of wood:** Oak (Photo) , Alder

**Type of fabric:** FLORENCE-2529 (Photo) , ANDRE-1300 , ANDRE-1301 , ANDRE-1302 , ANDRE-1303 , ANDRE-1304 , ANDRE-1305 , ANDRE-1306 , ANDRE-1307 , ANDRE-1308 , ANDRE-1309 , ANDRE-1310 , ART-DECO-VELVET-01 , ART-DECO-VELVET-02 , ART-DECO-VELVET-03 , ART-DECO-VELVET-04 , ART-DECO-VELVET-05 , ART-DECO-VELVET-06 , ART-DECO-VELVET-07 , ART-DECO-VELVET-08 , ART-DECO-VELVET-09 , ART-DECO-VELVET-10..11 (write a comment in order) , ATOS-111 , ATOS-112 , ATOS-113 , ATOS-114 , ATOS-115 , ATOS-116 , ATOS-117 , ATOS-118 , ATOS-119 , ATOS-120..126 (write a comment in order) , AURORA-2480 , AURORA-2481 , AURORA-2482

**Wood finishing:** Natural oil (Photo) , Natural varnish

**Wood color:** Black , Natural wood color (write a wood stain symbol in the order) , White

**Tubes:** Chrome steel tubes (Photo) , Black steel tubes