

Data current as of: 05-07-2025 17:32

Link to the product: <https://emrawood.com/quilted-fabric-bench-lpp-4-eco-leather-florence-2525-p-12100.html>

Quilted Fabric Bench LPP-4 Eco-Leather FLORENCE-2525



Number	918
Producer code	LPP-4
Manufacturer	Emra Wood Design

Product description



Quilted Fabric Bench LPP-4 Eco-Leather FLORENCE-2525
| Width: 40 cm - 200 cm | Height: 40 cm - 50 cm | Depth: 30 cm - 40 cm |

Technical data

Product-Code:

LPP-4

Catalogue number:

918

Condition:

New

Bench width:

40 cm - 200 cm

Choose from parameter

Bench height:

40 cm - 50 cm

Choose from parameter

Bench depth:

30 cm - 40 cm

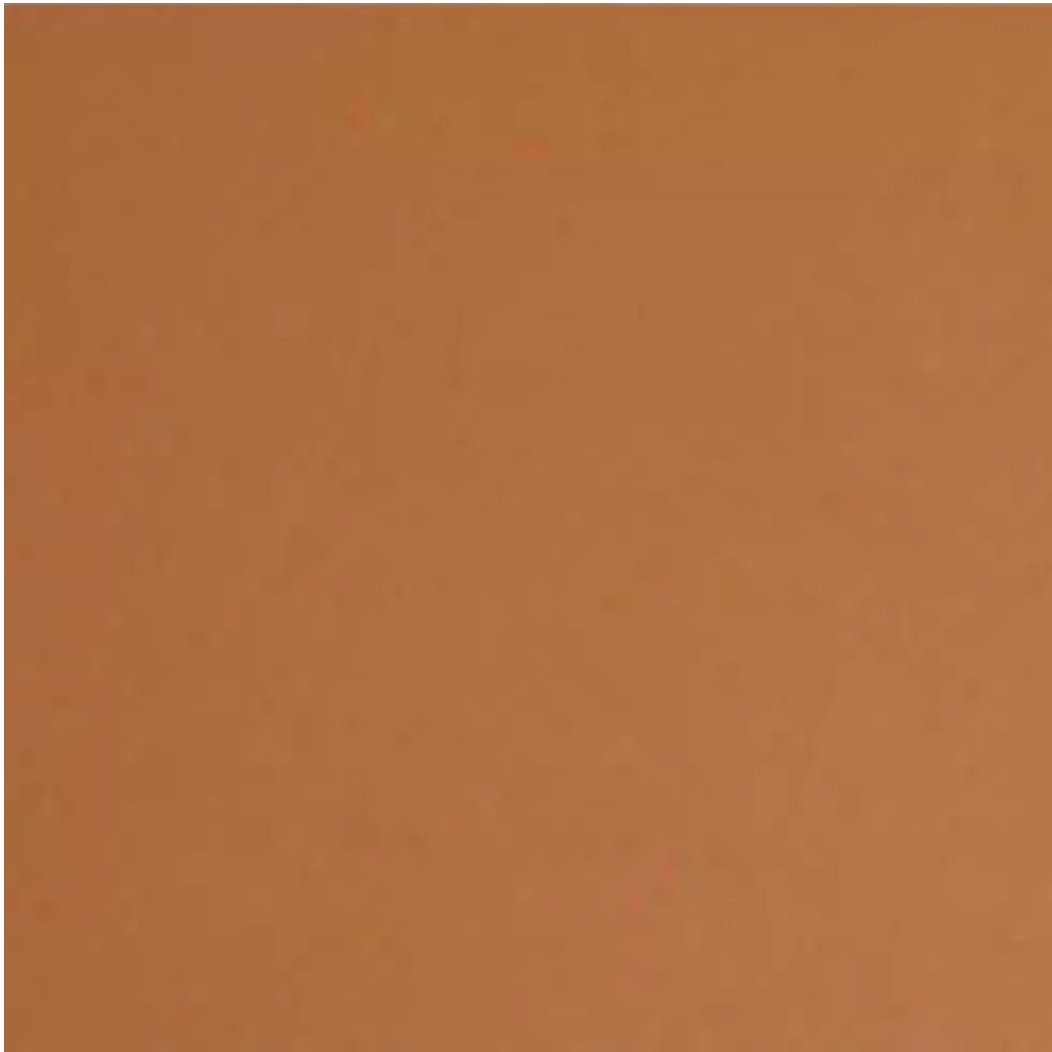
Choose from parameter

Type of fabric:

Choose from parameter

Type of fabric (Photo):

FLORENCE-2525



Product description

Quilted Fabric Bench LPP-4 Eco-Leather FLORENCE-2525

- A functional and practical bench for hallway, living room, bedroom, dressing room, bathroom, reception and office
- Some bench models have a practical shelf for shoes
- The frame and upholstery are made of the highest quality materials
- Production of the bench according to customer requirements

Product features

- Very high-quality and precise workmanship directly from the manufacturer
- The bench features an interchangeable seat to adapt the product to the future appearance of the room
- The bench does not require self-assembly and is delivered to the customer in its entirety
- Take a look at our fabric palette for more options
- We are at your disposal if you have any questions about the product
- By purchasing a product, you are buying a non-prefabricated item made according to specifications (selection of color, upholstery, materials, etc.)

About us

The Emra Wood company has been on the market since 2017. All products, which are handcrafted, are characterized by their aesthetic appearance and, above all, functionality at a high level. We have our own joinery and paint shop, as well as a well-trained team of professionals. We always try to meet the expectations of our customers. We use a wide range of high-quality upholstery materials of domestic and foreign production, which, combined with professional assembly, ensure their long-term functionality. Our company offers professional advice at the highest level. Our products are always tailored to individual requirements and needs.

WE DESIGN

We combine proven solutions with the right amount of inspirational creativity, which is why each of our projects is so unique.

WE IMPLEMENT PROJECTS ACCORDING TO INDIVIDUAL NEEDS

At the same time, we make full use of modern technologies, not forgetting about the technique of manual woodworking, which carpenters have been using for generations.

WE CONSULT AND ARE PROUD OF OUR WORK! We share our many years of experience with our customers so that the end result exceeds initial expectations. The products we manufacture are functional, aesthetic and made from the highest quality materials.



Discover Eco-Leather fabrics for this product

We offer the largest selection of seat fabrics!

Click on fabric name and discover all fabric selection.

[ATOS-ECO-LEATHER](#)



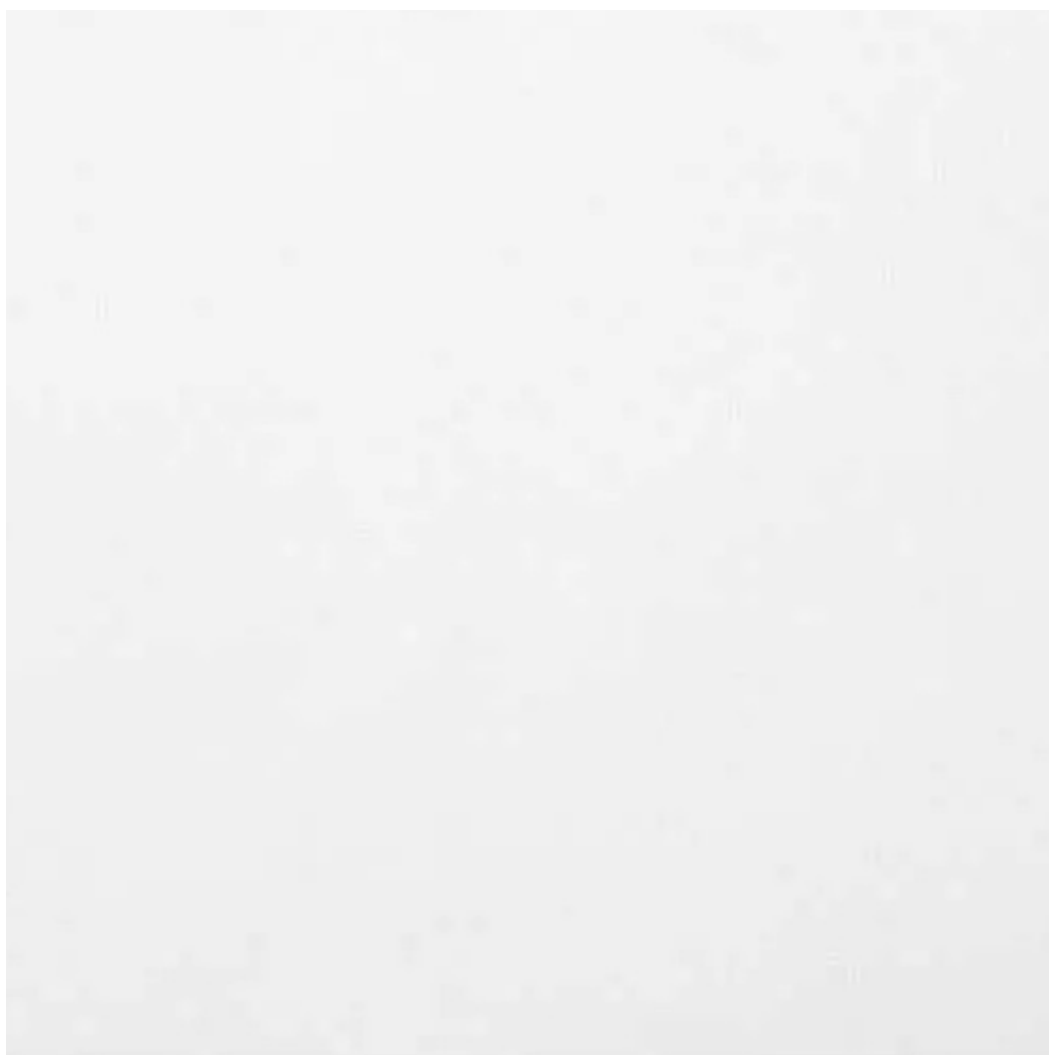
FLORENCE-ECO-LEATHER



FUSHION-ECO-LEATHER



VIENNA-ECO-LEATHER



Color palette - Wood stain - Nitro

⚠ Please note that the color of the wood may vary slightly from the color in the photo! ⚠



00



23-05



23-32



BN-125/09



22-01



22-10



22-481



22-61



22-60



22-68



25-25



21-19



23-01



23-351



20-01



21-57



22-05



22-51



22-62



25-50



22-65



26-32



21-05



23-24



23-48



20-07



22-112



22-15



22-45



22-63



22-40



22-66



27-50



21-37



23-29



23-50



BN-022



22-041



22-25



23-64



22-74



25-50



22-42



27-26



23-25



23-46



23-49



29-10



22-27



22-23



22-07



22-46



22-55



22-56



28-60.01

This product has additional options:

Width: 40 cm , 45 cm , 50 cm , 55 cm , 60 cm , 65 cm , 70 cm , 75 cm , 80 cm , 85 cm , 90 cm , 95 cm , 100 cm , 105 cm , 110 cm , 115 cm , 120 cm , 125 cm , 130 cm , 135 cm , 140 cm , 145 cm , 150 cm , 155 cm , 160 cm , 165 cm , 170 cm , 175 cm , 180 cm , 185 cm , 190 cm , 195 cm , 200 cm

Height: 40 cm , 45 cm , 50 cm

Depth: 30 cm , 35 cm , 40 cm

Type of wood: Alder (Photo) , Oak

Type of fabric: FLORENCE-2525 (Photo) , ATOS-111 , ATOS-112 , ATOS-113 , ATOS-114 , ATOS-115 , ATOS-116 , ATOS-117 , ATOS-118 , ATOS-119 , ATOS-120 , ATOS-121 , ATOS-122 , ATOS-123 , ATOS-124 , ATOS-125 , ATOS-126 , FLORENCE-2521 , FLORENCE-2522 , FLORENCE-2523 , FLORENCE-2524 , FLORENCE-2525 , FLORENCE-2526 , FLORENCE-2527 , FLORENCE-2528 , FLORENCE-2529 , FUSHION-01 , FUSHION-02 , FUSHION-03 , FUSHION-04 , FUSHION-05 , FUSHION-06 , FUSHION-07 , FUSHION-08 , FUSHION-09 , FUSHION-10 , FUSHION-11 , FUSHION-12 , FUSHION-13 , FUSHION-14 , FUSHION-15 , FUSHION-16 , VIENNA-01 , VIENNA-02 , VIENNA-03 , VIENNA-04 , VIENNA-05 , VIENNA-06 , VIENNA-07 , VIENNA-08 , VIENNA-09 , VIENNA-10 , VIENNA-11 , VIENNA-12 , VIENNA-13 , VIENNA-14 , VIENNA-15 , VIENNA-16

Wood finishing: Natural oil (Photo) , Natural varnish

Wood color: Natural (Photo) , Black , Natural wood color , Stain (write a wood stain symbol in the order) , White

Tubes: Chrome steel tubes (Photo) , Black steel tubes